

blue
by Blueair

Air purifier /
Luchtreiniger



User Manual /
Gebruikershandleiding /

Blue
PURE 221



Blue PURE 221

English User Manual
Model: Pure221

| | |
|-----------------------------------|---------|
| English User Manual | 04 -17 |
| Nederlandse gebruikershandleiding | 19 - 33 |

| | |
|-----------------------------|----|
| SAFETY | 04 |
| SYSTEM OVERVIEW | 06 |
| WHAT'S IN THE BOX | 08 |
| USAGE | 09 |
| SETUP | 10 |
| ON/OFF AND OPERATING SPEEDS | 11 |
| FILTERS | 12 |
| CARE AND MAINTENANCE | 16 |
| SPECIFICATIONS | 17 |

SAFETY

General safety instructions

Remember, the Pure 221 air purifier unit is an electrical appliance. Please read these safety instructions carefully before use and take the necessary precautions to reduce the risk of fire, electric shock or injury.

The Pure 221 warranty applies only if the unit is used according to these instructions.



WARNING: Indicates a hazardous situation that, if not avoided, could result in death or serious injury.



CAUTION: Indicates a hazardous situation that, if not avoided, could result in minor or moderate injury.

General



WARNING:

To avoid hazardous conditions, only the manufacturer, a service center authorized by Blueair or similarly qualified persons shall replace the power cord, if damaged.



CAUTIONS:

- Use the grounded power cable provided with your Pure 221 to plug directly into an appropriate, grounded electrical outlet. (Refer to the rating label on your unit).
- Do not alter the plug in any way.
- Remember to always disconnect the power supply before servicing the unit.
- Do not use the unit if the power cable or plug is damaged or malfunctions in any manner.

SAFETY

- Keep the power cable away from heated surfaces.
- Do not sit on, stand or climb onto the unit or use the unit either as a table or for storage.
- Do not place any objects on top of the unit, block air outlets or intakes, or allow foreign objects to enter the unit as this may cause an electric shock or damage the unit.

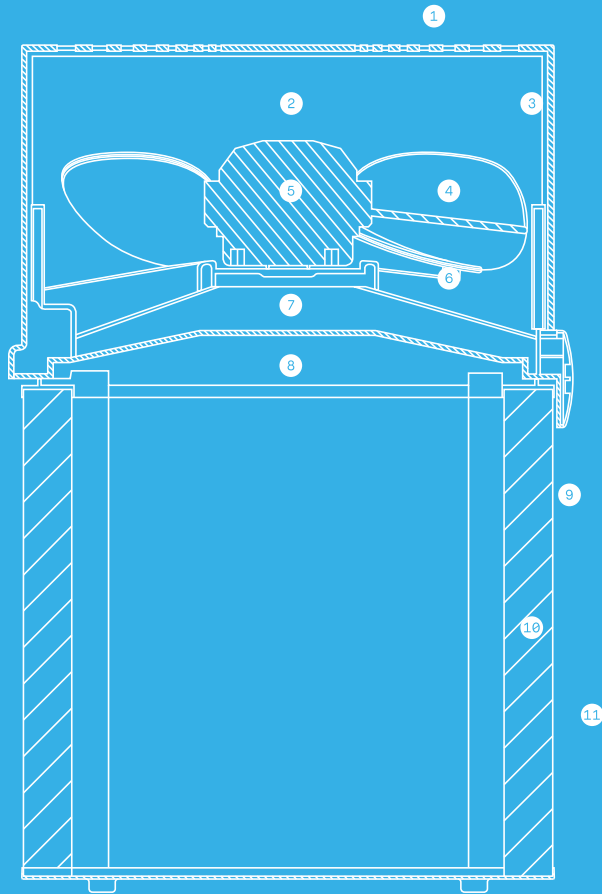
Intended Use



CAUTIONS:

- Supervise children to ensure that they do not play with the appliance.
- This appliance is not intended for use by persons (including children) with reduced physical, sensory or mental capabilities, or lack of experience and knowledge, unless they have been given supervision or instruction concerning use of the appliance by a person responsible for their safety.

SYSTEM OVERVIEW



Blueprint

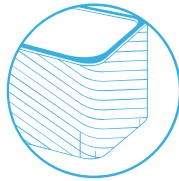
- ① Air outlet
- ② Ion chamber (Air stream optimizer)
- ③ Inner wall
- ④ Fan
- ⑤ Motor
- ⑥ Fan base
- ⑦ Protective grill
- ⑧ Release button for filter
- ⑨ External metal frame (optional fabric pre-filter)
- ⑩ Particle filter or Particle + Carbon filter
- ⑪ Air inlet 360°

WHAT'S IN THE BOX

Air purifier unit package



The air purifier unit



Particle or Particle + Carbon filter



Optional fabric pre-filter.
A fabric pre-filter captures larger particles and increases the lifetime of the main filter.

Options

- A Particle filter or Particle + Carbon filter.
- A fabric pre-filter
- Choice of color for the fabric pre-filter.

Placement

Place the unit in an upright position on the floor in your room. Be sure to place the unit where it won't be knocked over by any person or pet in the household.

Using the unit in your bedroom?:

After 7 seconds the light automatically dims to 10% of the full effect.

Placing the unit:



Place the unit in a location where air can circulate freely in, out and around the unit.



Do not place the unit near sources of heat, such as radiators, fireplaces or ovens.



Do not place the unit closer than 10 cm (4") from another object.



Do not place the unit near wet areas, such as bathrooms or laundry rooms where it may come into contact with water.



Do not place the unit directly on or against soft furnishings such as bedding or linen.

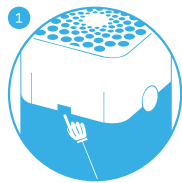


Do not place the unit outdoors.

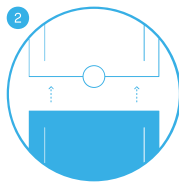
SET UP

Getting started

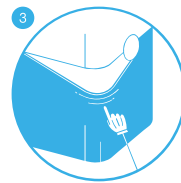
If the optional pre-filter is used refer to steps 1 to 5. Otherwise refer to steps 5 and 6.



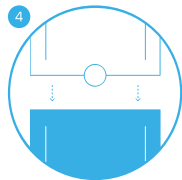
Gently press the buttons on both sides of the unit simultaneously.



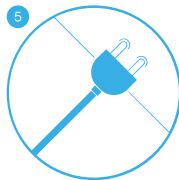
Remove the top portion of the unit.



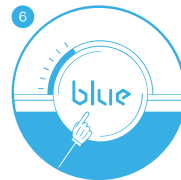
Then attach the fabric pre-filter. To ensure a smooth fit, pull it carefully over the metal frame.



Next, reposition the top of the unit onto the bottom and make sure it clicks into place.



Plug in the unit.



Press the button to turn the unit on. The unit automatically sets itself to the recommended energy-efficient operating speed. When the indicator light glows white your unit is working properly.

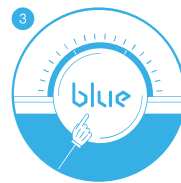
On/off and speed control



1
On/Low
Press once to turn the unit on and set it to the recommended energy-efficient speed.



2
Medium
Press twice to set to medium speed.



3
High
Press three times to set to high speed.



4
Off
Press a fourth time to turn the unit off.

Moreover, the unit has an Autostart feature. This means that the unit will automatically restart at the set speed if a power failure occurs, the unit is unplugged or a power switch timer is used.

FILTERS

Filters

General information:

The unit is delivered with two fabric pre-filters and either a Particle filter or Particle + Carbon filter. These filters remove the following pollutants:

Particle filters remove:



PM2.5*



Dust



Pollen



Pet dander



Mold



Dust mites



Bacteria

Particle + Carbon filters remove all the above pollutants, plus:



VOC



Smoke



Chemicals



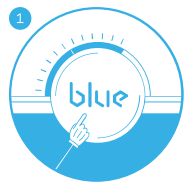
Cooking odors

*Particle matter smaller than 2.5 microns

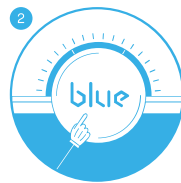
IMPORTANT!

Use only genuine Blueair filters to ensure proper function of your unit and to qualify for full warranty coverage.

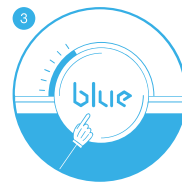
Button control functions



1
Change filter indicator
 When the indicator turns yellow (after 5 months of operation), it's time to order a new filter.



2
Change filter
 When the indicator light turns red (after 1 extra month of operation), you should change the main filter.



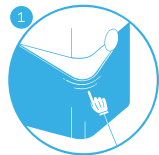
3
Reset the filter alert
 Press the button for three seconds to reset the filter alert.

You can change the filter before the indicator light turns red, i.e. when it first turns yellow. In this case, just reset the unit after changing the filter and use for another 6 months. (see "Change the main filter")

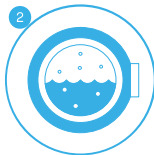
FILTERS

Vacuum or wash the pre-filter

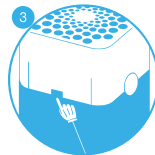
Occasionally vacuum the exterior of the fabric pre-filter to remove dust. Before removing the fabric pre-filter, turn off and unplug the unit.



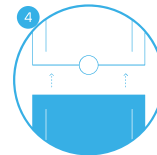
1 Gently pull and detach the pre-filter from the lower half of the unit.



2 Wash the pre-filter on a gentle, low temperature cycle in the washing machine.



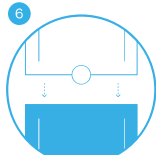
3 Before replacing the fabric pre-filter, gently press the release buttons on both sides of the unit until you hear a click.



4 Lift off the top of the unit.

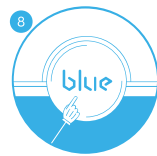


5 Re-fit the fabric pre-filter over the bottom part of the unit.



6 Replace the top of the unit, pressing firmly until you hear a click.

7 Plug in the unit.

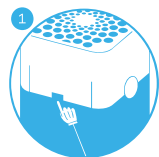


8 To restart the unit press the button for three seconds, and then release it.

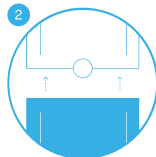
Change the main filter

When the indicator light turns red, it's time to change the main filter.

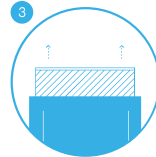
Before changing the main filter, turn off and unplug the unit.



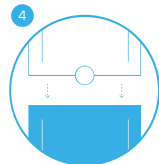
1 Gently press the release buttons on both sides of the unit until you hear a click.



2 Lift off the top of the unit.

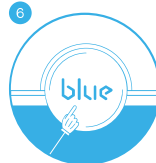


3 Remove the old main filter from the unit. Unfold the new main filter and insert into the unit.



4 Firmly press the top of the unit down onto the new main filter until you hear a click.

5 Plug in the unit.



6 To restart the unit press the button for three seconds, and then release it.

This lets the unit know that you have changed the main filter. The indicator light flashes 3 times and then changes from red to white.







General care

Take good care of your unit to ensure that it delivers optimal performance.

- Vacuum the pre-filter occasionally to remove dust, or wash it on a gentle, low temperature cycle in the washing machine.
- Change the main filter every six months, depending on the operating conditions.
- When the unit is open to change the filter, vacuum any dust that may have accumulated inside the unit.
- Occasionally wipe the top of the unit with a dry dust cloth.

SPECIFICATIONS

Specifications¹

| | | | |
|--------------------------------|---|---|--|
| Room size: | 50m ² (540 sq. ft.) | | |
| Clean Air Delivery Rate (CADR) | Smoke | Dust | Pollen |
| | cfm  350 | 350  | 350  |
| | m ³ /h  590 | 590  | 590  |
| Filter replacement indicator | Yes | | |
| On/Off timer | No | | |
| Speeds | 1-2-3-off | | |
| Dimensions | Height: | 522 mm (20.5 in) | |
| | Width: | 330 mm (13 in) | |
| | Depth: | 330 mm (13 in) | |
| | Weight: | 7 kg (15 lbs) | |
| Airflow rate | 230 - 620 m ³ /h (135 - 365 cfm) | | |
| Air exchange ² | 5 per hour (50 m ² or 540 sq.ft.room) | | |
| Power usage ⁴ | 30 - 61 W | | |
| Noise level | 31 - 56 dB(A) | | |
| Average filter service life | six months ³ | | |
| Warranty | Local regulations | | |

Blue is available in different colors for the Pure 221 air purifier unit. The colored fabric works as a pre-filter.

¹Certified ratings as stated are based on U.S. version models (120VAC, 60Hz) with Blue Particle Filter. Ratings may be affected by use of other Blue filter models.

²Air changes per hour are calculated on the recommended room size, assuming 8-foot (2.4-m) ceilings. For smaller rooms, the air changes per hour will increase.

³Depending on air quality in the area of use, the recommended six-month filter lifetime may be longer.

⁴The available electrical power voltage and frequency affects the power consumption of the unit. the power consumption might therefore be different from the stated value.